

## Semi Dry Blotters

These Semi Dry Blotters offer rapid transfer times for DNA, RNA and protein blotting - typically 15 to 30 minutes.

All units can be used for all types of blotting: western, southern and northern via uncomplicated buffer and set up procedures and are compatible with gel thicknesses from 0.25 up to 10mm without the need for additional equipment.

Semi Dry Blotting has the added benefit of economic transfers due to very low buffer volumes – typically only a few millilitres of buffer are required per transfer. The electrodes, comprising platinum coated anode and stainless steel cathode, will exhibit practically no corrosion and so provide many years of trouble free use. Uniform heat dispersion across the blot sandwich ensures stable transfer times and no heat induced sample loss or transfer distortions.



### KEY FEATURES

- Rapid transfer times
- Western, Southern and Northern Blots
- Economic Transfers due to very low buffer volumes
- Screw down lid - accommodates gels from 0.25 up to 10mm
- Uniform heat dispersion

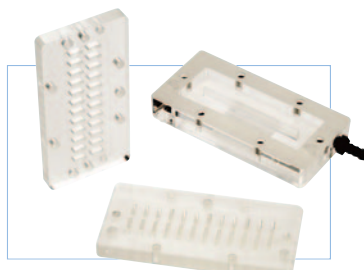
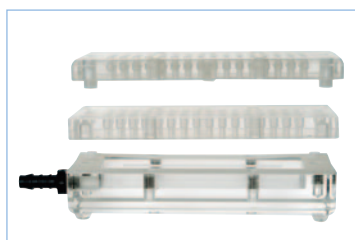
## Dot and Slot

Dot Blot and Slot Blot microfiltration manifolds are designed for DNA and RNA filter blot hybridisations and immunological (Ag/Ab) screening applications.

Machined from high density acrylic, their precision lapped mating surfaces and leak proof gasket ensures uniform filter contact, preventing lateral transfer of samples- smudging – by ensuring that a complete vacuum is formed. A permanent filter template is provided with each manifold to simplify the cutting of filters to the exact size. A vacuum of approximately 600mm Hg (0.8 Bar) is required during sample application. Four configurations are available for 24 & 48 for slots and 48 & 96 wells for dots in the configuration of standard microplates. Each well is alpha-numerically grid referenced for easy identification.

### KEY FEATURES

- Low cost
- Easy assembly
- Alpha-numeric sample identification
- Four sample configurations



Model	CSL-D48	CSL-D96	CSL-S24	CSL-S48
Configuration	3 x 16	8 x 12	2 x 12	3 x 16
Size of well 12mm deep	6mm diameter 12mm deep	6mm diameter 12mm deep	6 x 0.5mm 12mm deep	6 x 0.5mm
Vacuum required	----- 600mm Hg 0.8 BAR with cold trap -----			
Unit dimensions	6x9.5x10cm	6x10.5x14cm	6x7.4x8.3cm	6x9.5x10cm
Membranes size required	12.1 x 4.4cm	11 x 7.4cm	12.1 x 4.4cm	12.1 x 4.4cm

### ORDERING INFORMATION

#### SEMI DRY BLOTTERS

SD10	Semi Dry Mini, 10 x 10cm System	SD20	Semi Dry Midi, 20 x 20cm System
SD10-PP3AMP	Semi Dry Mini SD10 and 3Amp Power Supply, POWERPRO3AMP	SD20-PP3AMP	Semi Dry Midi SD20 and 3Amp Power Supply, POWERPRO3AMP

#### DOT & SLOT BLOTTERS

CSL-D48	48-well Dot Blot Manifold, 3 x 16 array	CSL-S24	24-well Slot Blot Manifold, 2 x 12 array
CSL-D96	96-well Dot Blot Manifold, 8 x 12 array	CSL-S48	48-well Slot Blot Manifold, 3 x 16 array



**Wolflabs**

# Wolf Laboratories Limited

[www.wolflabs.co.uk](http://www.wolflabs.co.uk)

Tel: 01759 301142

Fax: 01759 301143

[sales@wolflabs.co.uk](mailto:sales@wolflabs.co.uk)



**Use the above details to contact us if this literature doesn't answer all your questions.**

**Pricing on any accessories shown can be found by keying the part number into the search box on our website.**

The specifications listed in this brochure are subject to change by the manufacturer and therefore cannot be guaranteed to be correct. If there are aspects of the specification that must be guaranteed, please provide these to our sales team so that details can be confirmed.

